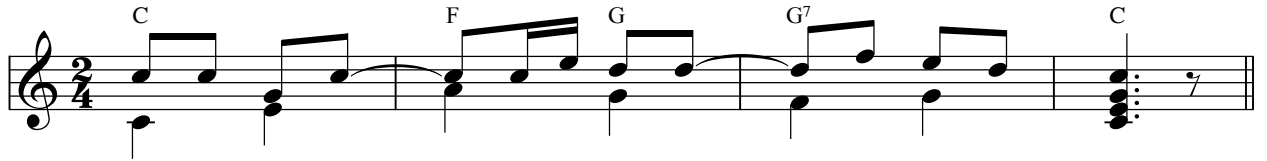


Như Trẻ Thơ

Vũ Đình Ân



Nhạc dạo ...

Musical notation for the first line of the song. It includes a treble and bass clef. The melody is in the treble clef, and the bass line is in the bass clef. Chords C7 and C are indicated above the staff.

ĐK: Ai muốn vào Thiên Đàng hãy như trẻ nhỏ.

Ai muốn vào Thiên Đàng hãy như trẻ

Musical notation for the second line of the song. It includes a treble and bass clef. The melody is in the treble clef, and the bass line is in the bass clef. Chords F, C, G7, and C are indicated above the staff.

Phúc (là) phúc cho ai có tâm hồn đơn sơ.

thơ. Phúc cho ai có tâm hồn đơn sơ.

Musical notation for the third line of the song. It includes a treble and bass clef. The melody is in the treble clef, and the bass line is in the bass clef. Chords F, G, C, and E7 are indicated above the staff.

1. Ai ăn ở đơn sơ Nước Trời luôn dành chỗ.
2. Ai ăn ở khiêm cung đáng được ban hồng phúc.
3. Ai ăn ở khiêm nhu sống đời luôn thờ Chúa.

Musical notation for the fourth line of the song. It includes a treble and bass clef. The melody is in the treble clef, and the bass line is in the bass clef. Chords Am, G, G7, and C are indicated above the staff.

Ai muốn vào Thiên Đàng hãy như trẻ thơ.
Trên Nước Trời luôn dành chỗ cho người ngay.
Luôn có lòng trong sạch phúc vinh đời sau.